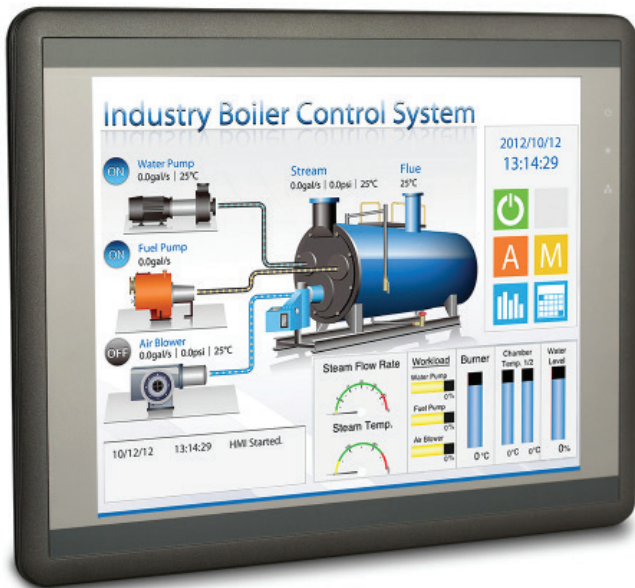


HMI5121XL



12.1" Slimline Industrial HMI

- Aluminum enclosure
- 16.2 million color TFT LCD display
- Analog resistive touchscreen
- 1024 x 768 resolution
- 32 Bit RISC CPU, 1GHz
- 256MB flash memory, 256MB RAM
- Moisture-resistant PCB coating
- Built-in ethernet
- 2 serial ports - Isolated RS485 port
- 1 USB host port, 1 USB client port
- Isolated power supply
- Two year warranty

Our lowest priced 12-inch Graphic HMI. The HMI5121XL makes the perfect choice when you need a high-quality, value-priced HMI.

The Maple Systems HMI5121XL is a slim-form operator interface with a bright 1024 x 768 pixel touchscreen display, a high speed 1GHz microprocessor and 256MB of memory for complex and graphic intensive projects.

The ultra-thin form factor of the HMI5121XL makes mounting in tight spots easy and the fanless design requires no extra space for cooling. The HMI5000 Series is also NEMA4X/IP65 rated, allowing for peak performance in adverse conditions.

With our EZwarePlus software package, you can configure the HMI5121XL to your exacting specifications. The extensive

features of the software include alarm management, batch recipes, BACnet® for building automation and control networks and much more - all making your operator interface a more integral part of your automation control system.

Maple Systems stands behind your HMI product with a two-year warranty, complementary technical support, an online support center, and numerous online instructional videos.



Every Machine
Needs the
Human Touch



www.maplesystems.com

HMI5121XL Specifications

Hardware

CPU Type	32-bit RISC CPU, 1GHz
Memory	256MB Flash, 256MB RAM
SD Card Slot	Yes
Ethernet Port	10/100 Base-T (RJ45)
Serial Ports	Com1: RS-232/RS-485, 2 or 4 wire Com3: RS-485, 2 wire
USB Ports	1 host 2.0 port, 1 client 2.0 port
RTC	Built-in

Display

Type	12.1" TFT color
Size (WxH)	9.75 x 7.25 inches [248 x 184mm] 12.1" diagonal
Resolution (pixels)	1024 x 768
Brightness (cd/m ²)	500
Contrast Ratio	700:1
Max Colors	16.2 million
Viewing Angle (°)	95/95/120/120 (T,B,R,L)
Backlight	LED
Backlight Longevity	>50,000 hrs.

Specifications subject to change without notice.

Touchscreen

Type	4-wire analog resistive
Resolution	Continuous
Light Transmission	Above 80%
Lifespan	1 million activations minimum

Environmental

Operating Temperature	32 ~ 122°F (0 ~ 50°C)
Storage Temperature	-4° ~ 140°F (-20 ~ 60°C)
Relative Humidity	10% ~ 90% (non-condensing)
Shock (operation)	10 to 25Hz (X,Y,Z direction, 2G, 30 minutes)
Ratings	IP65, NEMA 4X compliant front panel
Certifications	cULus, CE, RoHS

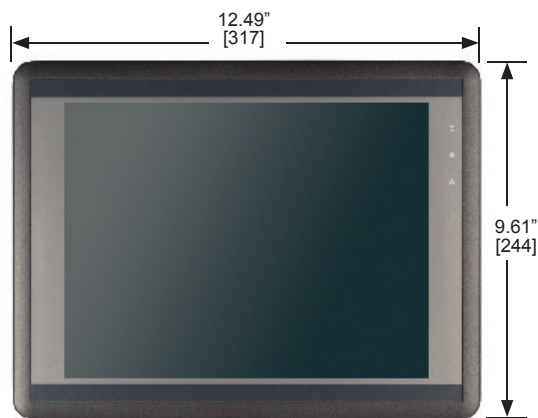
Mechanical / Electrical

Enclosure	Aluminum
Dimensions (WxHxD)	12.49 x 9.61 x 1.82 inches [317 x 244 x 46mm]
Panel Cutout Dim. (WxH)	12.01 x 9.09 inches [305 x 231mm]
Weight	4.6 lb [2.1kg]
Mounting	Panel mount or VESA 75 compatible
Power Requirements	24VDC, 800mA maximum
Isolation Resistance	Exceed 50MΩ at 500VDC

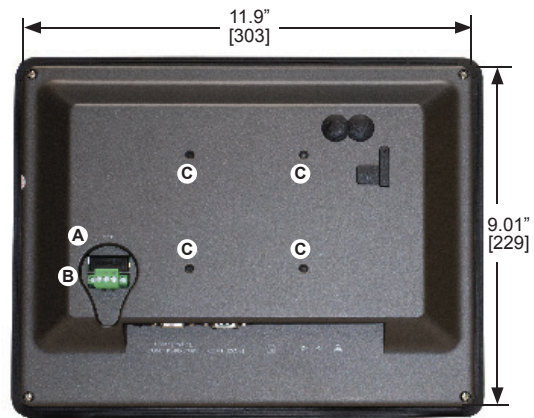
Order Number

HMI5121XL	12.1" Slim Graphic HMI
-----------	------------------------

Dimensions



Front View



Rear View



Bottom View

- A Fuse
- B Power Connector
- C VESA 75mm screw holes
- D Com1, Com3 RS485
- E Com1, RS232
- F SD card slot
- G USB Host & Client ports
- H Ethernet Port 10/100

Dimensions in inches [mm]

Maple Systems, Inc.

808 134th St SW, Suite 120, Everett, WA 98204

425.745.3229 • 425.745.3429 (fax) • Email: maple@maple-systems.com • www.maplesystems.com