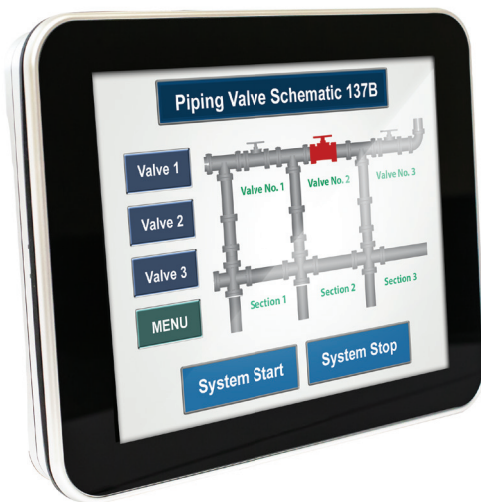


RMI5090



9.7" Capacitive Touchscreen Display

- Capacitive touchscreen
- 1024 x 768 resolution
- 262,000 color TFT display
- Ultra-slim form factor
- 32 Bit RISC CPU, 1GHz
- 512MB Flash memory, 1GB RAM
- Panel mount or VESA 75
- Built-in speaker
- Optional display for RMI5010
- Connects to RMI5010 via Ethernet port
- 24VDC input required

The high-tech RMI5090 was designed as an optional display for the RMI5010. A bright, capacitive touchscreen provides a smooth, easy user experience to this local display.

The Maple Systems RMI5090 perfectly complements the RMI5010 with a bright 1024 x 768 pixel touchscreen display, high-speed 1GHz microprocessor, and 512MB of memory for complex graphic-intensive projects.

The RMI5090 features a capacitive touchscreen made of durable 7H tempered glass, offering the ability to swipe, pinch, and zoom on trend and historical data objects. A high-resolution LCD and Cortex A9 1GHz Dual-Core processor deliver top-notch graphics performance to any project.

Common configurations include:

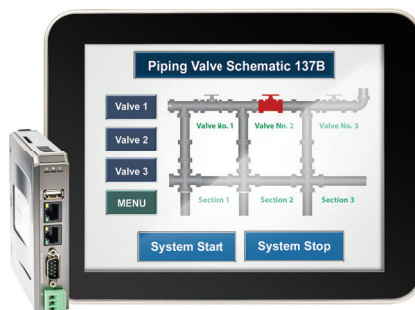
- Connect up to three RMI5090 displays to one RMI5010 controller

- One RMI5090 can monitor and rapidly switch between up to three RMI5010 controllers, but can only access information one controller at a time
 - The RMI5090 can only be paired with the RMI5010

The RMI5090 requires no programming. Simply connect it to a 24VDC and plug the display into the RMI5010's Ethernet port.

Press a button to upload your project from the RMI5010 and you are up and running.

The thin form factor makes the RMI5090 ideal for panel mounting in tight spots, while the fanless design requires no extra space for cooling. This local display delivers a high-tech experience to any operator and is perfectly paired with the RMI5010.



**Every Machine
Needs the
Human Touch**



www.maplesystems.com

RMI5090 Specifications

Hardware

| | |
|---------------|----------------------------|
| CPU Type | 32-bit RISC Cortex-A9 1GHz |
| Memory | 512MB Flash, 1GB RAM |
| SD Card Slot | N/A |
| Ethernet Port | 10/100/1000 Base-T |
| Serial Ports | N/A |
| USB Ports | N/A |
| RTC | Built-In |

Display

| | |
|---------------------------------|-----------------------|
| Type | 9.7" TFT |
| Size (WxH) | 9.7" diagonal |
| Resolution (pixels) | 1024 x 768 |
| Brightness (cd/m ²) | 350 |
| Contrast Ratio | 500:1 |
| Max Colors | 262,000 |
| Viewing Angle (°) | 50/70/70/70 (T,B,R,L) |
| Backlight | LED |
| Backlight Longevity | >30,000 hrs. |

Specifications subject to change without notice.

Touchscreen

| | |
|--------------------|---------------------------------|
| Type | Tempered glass, capacitive type |
| Resolution | N/A |
| Light Transmission | Above 85% |
| Lifespan | 10 million activations minimum |

Environmental

| | |
|-----------------------|--|
| Operating Temperature | 32 ~ 122°F (0 ~ 50°C) |
| Storage Temperature | -4° ~ 140°F (-20 ~ 60°C) |
| Relative Humidity | 10 ~ 90% (non-condensing) |
| Shock (operation) | 10 to 25Hz (X,Y,Z direction, 2G, 30 minutes) |
| Ratings | IP65, NEMA 4 |
| Certifications | CE, cULus, RoHS |

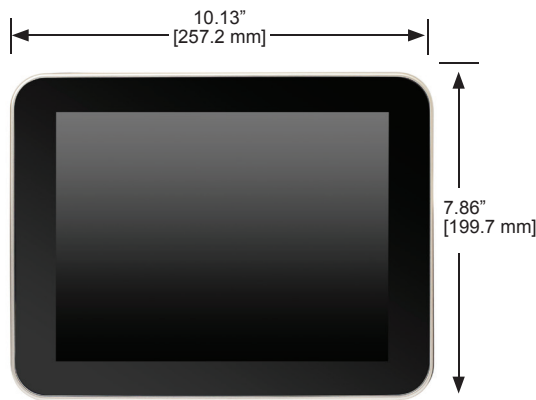
Mechanical / Electrical

| | |
|-------------------------|---|
| Enclosure | Plastic - charcoal grey |
| Dimensions (WxHxD) | 10.13" x 7.86" x 1.29" [257.2 x 199.7 x 32.7mm] |
| Panel Cutout Dim. (WxH) | 9.78" x 7.52" [248.5 x 191mm] |
| Weight | 1.68 lb [0.76kg] |
| Mounting | Panel mount, VESA compatible |
| Power Requirements | 24VDC, 900mA |
| Isolation Resistance | Exceed 50MΩ at 500VDC |

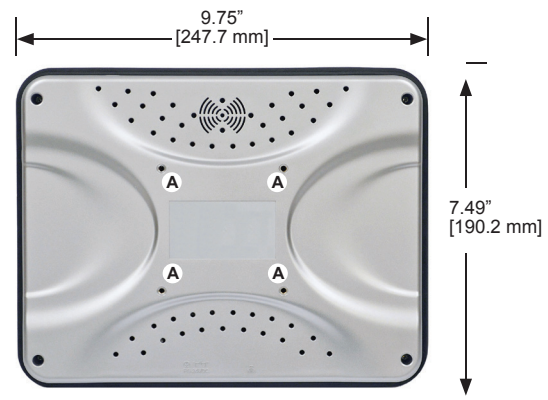
Order Number

| | |
|---------|-------------------------------|
| RMI5090 | Cloud human machine interface |
|---------|-------------------------------|

Dimensions



Front View



Rear View

- A VESA 75mm screw holes
- B Power Connector
- C Ethernet port



Bottom View

Dimensions in inches [mm]

Maple Systems, Inc.

808 134th St SW, Suite 120, Everett, WA 98204

425.745.3229 • 425.745.3429 (fax) • Email: maple@maple-systems.com • www.maplesystems.com