

# SERIES 60P

**Dynapar™ brand**

## Heavy Duty Rotopulser<sup>®</sup>

### Key Features

- Classic Mill-Duty Foot or Face Mount Design
- MS Connector or 1/2" Conduit Entry
- Unbreakable Code Disc



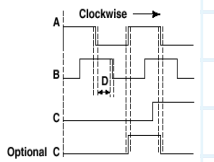
## SPECIFICATIONS

### ELECTRICAL

Power Requirements: 5 to 15 VDC max.  
 115 mA max. plus load requirements  
 Output: TC1428 Differential Line Driver,  
 40 mA Sink/ Source  
 Frequency Response: 50 kHz  
 Minimum Free Path: Between any A and B  
 transition (Distance D) will not be less than  
 12.5% of one full electrical cycle. This  
 includes effects of jitter, phase and  
 symmetry shifts.  
 Mating Connector: 10- pin: style MS3106A- 18- 1S,  
 Dynapar Part No. MCN- N6

### ELECTRICAL OUTPUT

Note: Signal C (Marker) is low for the first 180° of shaft rotation clockwise (as viewed from shaft end), and is high for the next 180°.



### ELECTRICAL CONNECTIONS

#### Single-Ended Output

Function (If Used)	Cable #14002090010* 6 PIN Single-Ended		Twisted Pairs Cable #14004190010* 10 PIN Differential		Terminal Strip Connector No.
	Pin	Color	Pin	Color	
Signal A	B	RED	B	RED	1
Signal Ā	-	-	G	BLK	12
Signal B	D	BLU	D	BLU	3
Signal B̄	-	-	H	BLK	11
Signal C (Marker)	A	GRN	A	GRN	4
Signal C̄	-	-	I	BLK	10
+V	E	WHT	E	WHT	5
Common	C	BLK	C	BLK	2
Shield	F	SHIELD	F	SHIELD	6
Not Used	-	-	J	-	7, 8, 9

\*This is a mating connector/cable assembly described in the Encoder Accessories section of this catalog. Color-coding information is provided here for reference.

#### Dual Isolated Output

Function (If Used)	Code 4 is K or L			Code 4 is M*	
	6 PIN Primary	10 PIN Primary	7 PIN Secondary	10 PIN Primary	10 PIN Secondary
Signal A	B	B	A	B	B
Signal Ā	-	G	C	G	G
Signal B	D	D	B	D	D
Signal B̄	-	H	E	H	H
Signal C	A	A	(No Marker)	-	(No Marker)
Signal C̄	-	I	(No Marker)	-	(No Marker)
Primary Power	E	E	D	E	E
Primary Common	C	C	F	C	C
Secondary Power	-	-	-	-	J
Secondary Common	-	-	-	-	I
Shield	F	F	G	F	F
Not Used	-	J	-	A,I,J	A

\*To provide quick backup, jumper cable assembly pins E & J and C & I; then, if the primary output fails, move the connection from the primary to secondary connector.

### MECHANICAL

Slew Speed: 3600 RPM  
 Shaft Diameter: 5/ 8"  
 Inertia: 285 gm- cm 2 max.  
 Typical Starting Torque: 15 oz- in  
 Bearings: Motor Duty Bearings  
 Weight: 10 lbs.  
 Shaft Loading: Radial: 45 lbs. overhung;  
 Axial: 15 lbs.

### ENVIRONMENTAL

Operating Temp. Range: 0 to 54 °C  
 Enclosure Rating: NEMA 12 / IP54;  
 NEMA 4 / IP66 with optional shaft seals

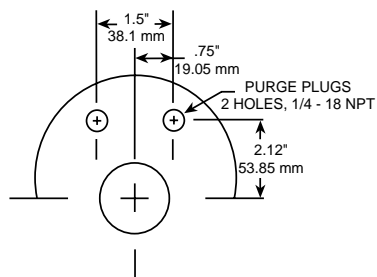
## Ordering Information

To order, complete the model number with code numbers from the table below:

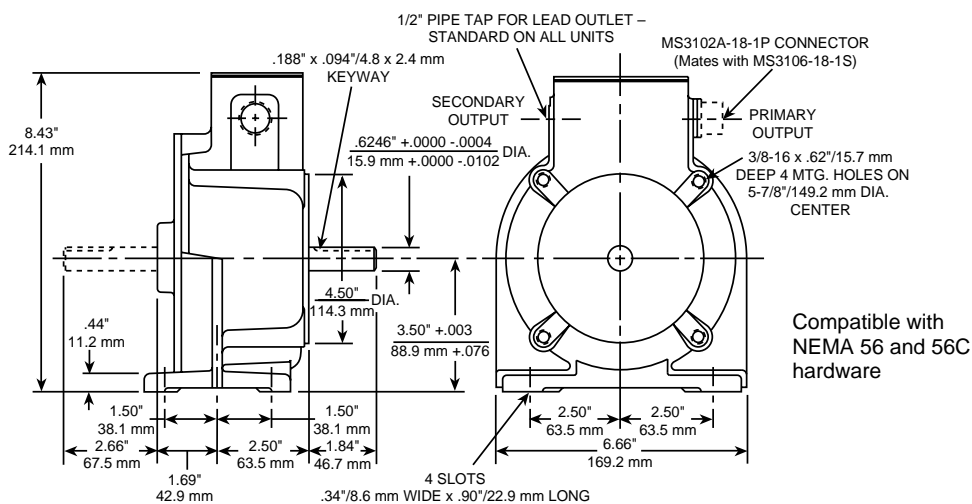
Code 1: Model	Code 2: Housing	Code 3: Shaft	Code 4: Output	Code 5: Voltage	Code 6: Pulses/Rev	Code 7: Wiring	Code 8: Misc
<b>6</b> □	<b>P</b> □	□	□	<b>F</b> □	□ □ □ □	□	□
<b>2</b> Bidirectional, Heavy Duty <b>3</b> Bidirectional with Marker, Heavy Duty	<b>P</b> Mill Duty	<b>M</b> 5/8" Dia, Single Shaft with Keyway <b>N</b> 5/8" Dia, Double Shaft with Keyway	<b>D</b> Differential <b>E</b> Single Ended <b>K</b> Single Ended, Dual Isolated, 6 and 7 pin connectors <b>L</b> Differential, Dual Isolated, 10 and 7 Pin Connectors  Available when Code 1 is 62: <b>M</b> Differential, Dual Isolated, 10 and 10Pin Connectors	<b>F</b> 5 to 15 VDC	<b>0001 0096 0360 0750</b> <b>0002 0100 0375 0800</b> <b>0004 0120 0382 0805</b> <b>0005 0125 0384 0833</b> <b>0006 0127 0390 0900</b> <b>0010 0128 0400 1000</b> <b>0012 0150 0402 1024</b> <b>0015 0180 0430 1200</b> <b>0018 0192 0450 1250</b> <b>0020 0200 0500 1270</b> <b>0025 0203 0508 1500</b> <b>0040 0240 0512 1800</b> <b>0045 0250 0530 2000</b> <b>0050 0256 0550 2160</b> <b>0060 0300 0600 2250</b> <b>0064 0306 0625 2400</b> <b>0090 0315 0720 2500</b>	<b>A</b> MS Connector  Available when Code 4 is D or E: <b>T</b> Terminal Strip	<b>O</b> No Purge Plugs, No Shaft Seals <b>A</b> Purge Plugs, No Shaft Seals <b>B</b> No Purge Plugs, Shaft Seals <b>C</b> Purge Plugs and Shaft Seals

## DIMENSIONS inches [mm]

Purge Plug Location



Approximate Dimensions



**Satellite Locations:**

- **North America:** North Carolina, South Carolina, Connecticut, Massachusetts, New York, Canada, British Virgin Islands
- **West Indies:** St. Kitts • **Europe:** United Kingdom, Italy, France, Germany, Spain, Slovakia
- **South America:** Brazil • **Asia:** China, Japan, Korea, Singapore

**Customer Service:**

Tel.: +1.800.873.8731  
Fax: +1.847.662.4150  
custserv@dynapar.com

**Technical Support**

Tel.: +1.800.234.8731  
Fax: +1.847.782.5277  
northstar.techsupport@dynapar.com